




**KINGSMILL**

*Resort*

WILLIAMSBURG, VIRGINIA

**MEETINGS & EVENTS**





**NESTLED ALONG THE SCENIC BANKS OF THE JAMES RIVER, KINGSMILL RESORT OFFERS A SECLUDED, PICTURESQUE BACKDROP DESIGNED TO INSPIRE PRODUCTIVITY AND CREATIVITY.**

---

The beauty doesn't stop at the views. Our dedicated team is here to ensure your event runs seamlessly, so your group can focus on what matters most – whether it's meetings, milestones, or tee times.

With spacious meeting rooms full of natural light, a state-of-the-art fitness center, and two championship golf courses, Kingsmill is the perfect destination for any occasion.

All of this, and more, awaits you in this serene riverside retreat.

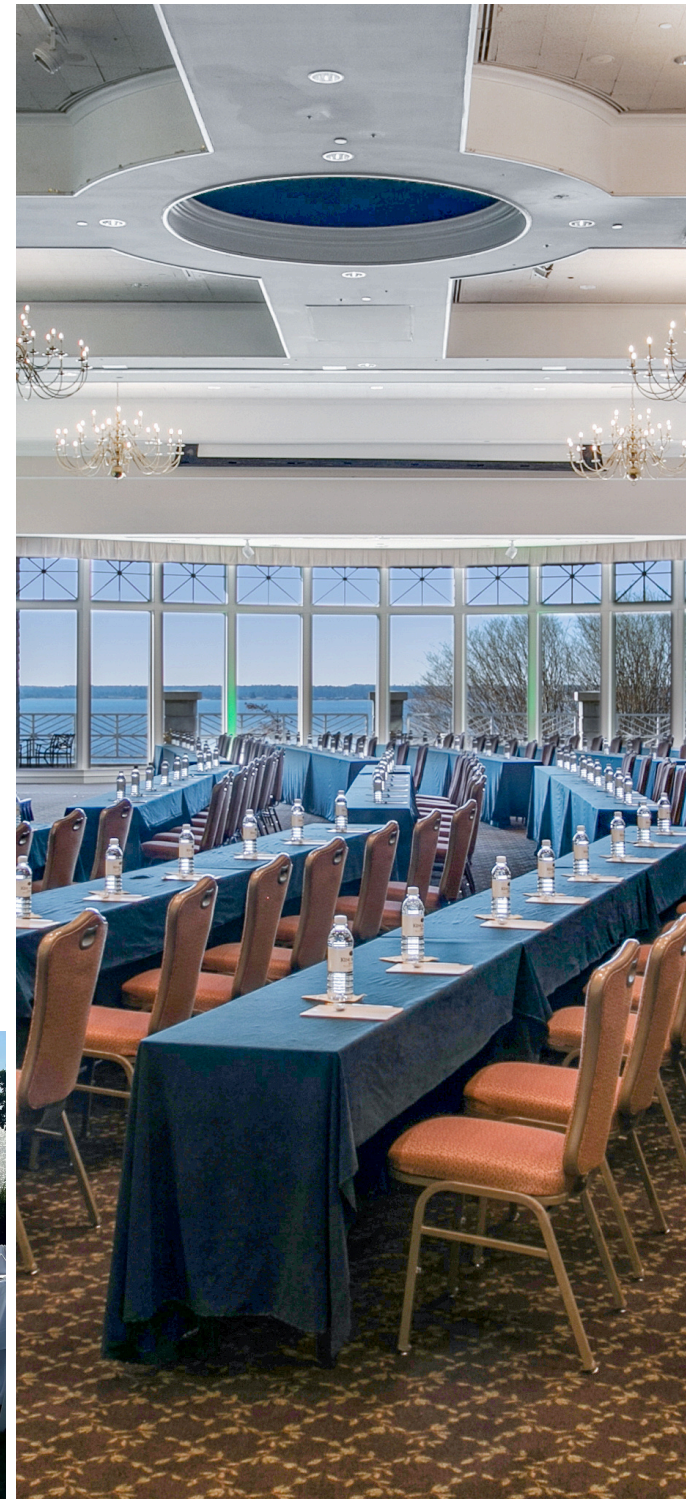
## THE RIGHT SETTING FOR ANY MEETING

Our 20,000+ square foot conference center offers both indoor and outdoor venues, all set against the stunning backdrop of the James River and our natural resort landscape. With waterfront views and a serene atmosphere, Kingsmill Resort creates the perfect environment for sharing new ideas, seeking innovative solutions, and building toward the future.

The 6,050-square-foot James River Grand Ballroom accommodates up to 450 guests and features floor-to-ceiling windows, bathing the space in natural light and providing breathtaking views of the surrounding beauty.

At Kingsmill Resort, we take the stress out of planning. Our dedicated staff is here to help you select from 13 versatile meeting rooms, provide our signature continuous break service, handle all AV and equipment needs, manage on-site logistics or off-site transportation, and ensure every detail is flawlessly executed for the success of your event.

**ALHI**  
ASSOCIATED LUXURY HOTELS  
INTERNATIONAL



## WHERE BUSINESS MEETS INSPIRATION

Kingsmill Resort redefines meetings with thoughtfully designed spaces, exceptional service, and a setting that inspires collaboration, creativity, and success. Every detail is crafted to spark fresh ideas and energize your team.

### The Perfect Venue for Every Event

Whether you're hosting a large-scale conference, an intimate executive retreat, or a team-building wellness retreat, Kingsmill Resort has the ideal space for your needs. Choose from versatile venues like our 6,000 square foot grand ballroom for larger gatherings or more intimate settings for focused sessions, retreats, or wellness experiences.

For smaller events, discover exclusive venues such as the Estate, River View Room, or Moody's. Designed for groups under 50, these elegant spaces offer advanced audiovisual technology, customizable menus, and personalized service, ensuring every detail is flawless. Wellness retreats are also a popular option, combining serene surroundings with activities designed to rejuvenate and inspire your team.

### Effortless Planning for Outstanding Results

Our dedicated event coordinators handle every aspect of your event, from tailored menus to luxurious accommodations. With Kingsmill Resort as your partner, you can focus on your goals while we ensure everything runs smoothly.



© Caroline Martin Bookbinder



© Caroline Martin Bookbinder







## INSPIRED BY COMFORT

From the moment guests step into one of our over 300 villa-style accommodations, they'll feel pampered and at ease. Whether unwinding by the warmth of a cozy fireplace or savoring a glass of wine on a private balcony, every detail has been thoughtfully curated to make Kingsmill your perfect home away from home.

**River** accommodations are located along the James River, these rooms offer the closest access to pools, the sports club, spa, and restaurants.

**Deluxe** accommodations are situated near Wareham's Pond, these rooms are conveniently close to the sports club, spa, and dining options.

**Resort** accommodations are nestled along the golf course, tennis courts, and woodlands, these rooms are just a short walk from the sports club, spa, and restaurants.

### King and Double Guest Rooms

Average 375 square foot, featuring an in-room mini-refrigerator, desk, coffee maker, and private balcony or patio.

### One, Two, and Three-Bedroom Condos

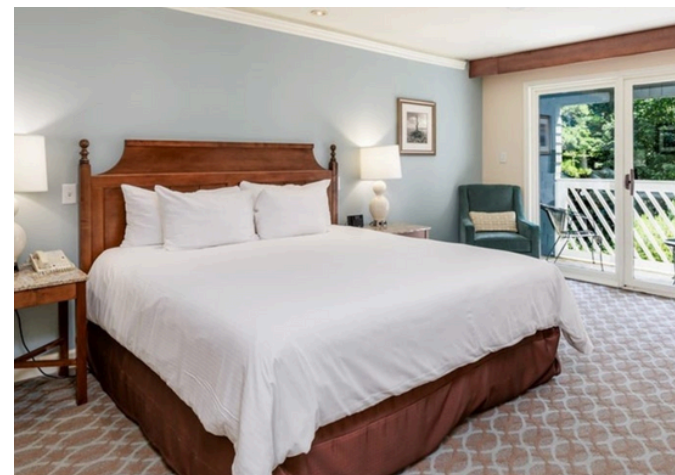
Average 820 square foot, complete with a spacious living room, queen-sized sleep sofa, and a fully equipped kitchen with full-size refrigerator, stove, dishwasher, and basic dishware.

### Three and Four-Bedroom Cottages on the James

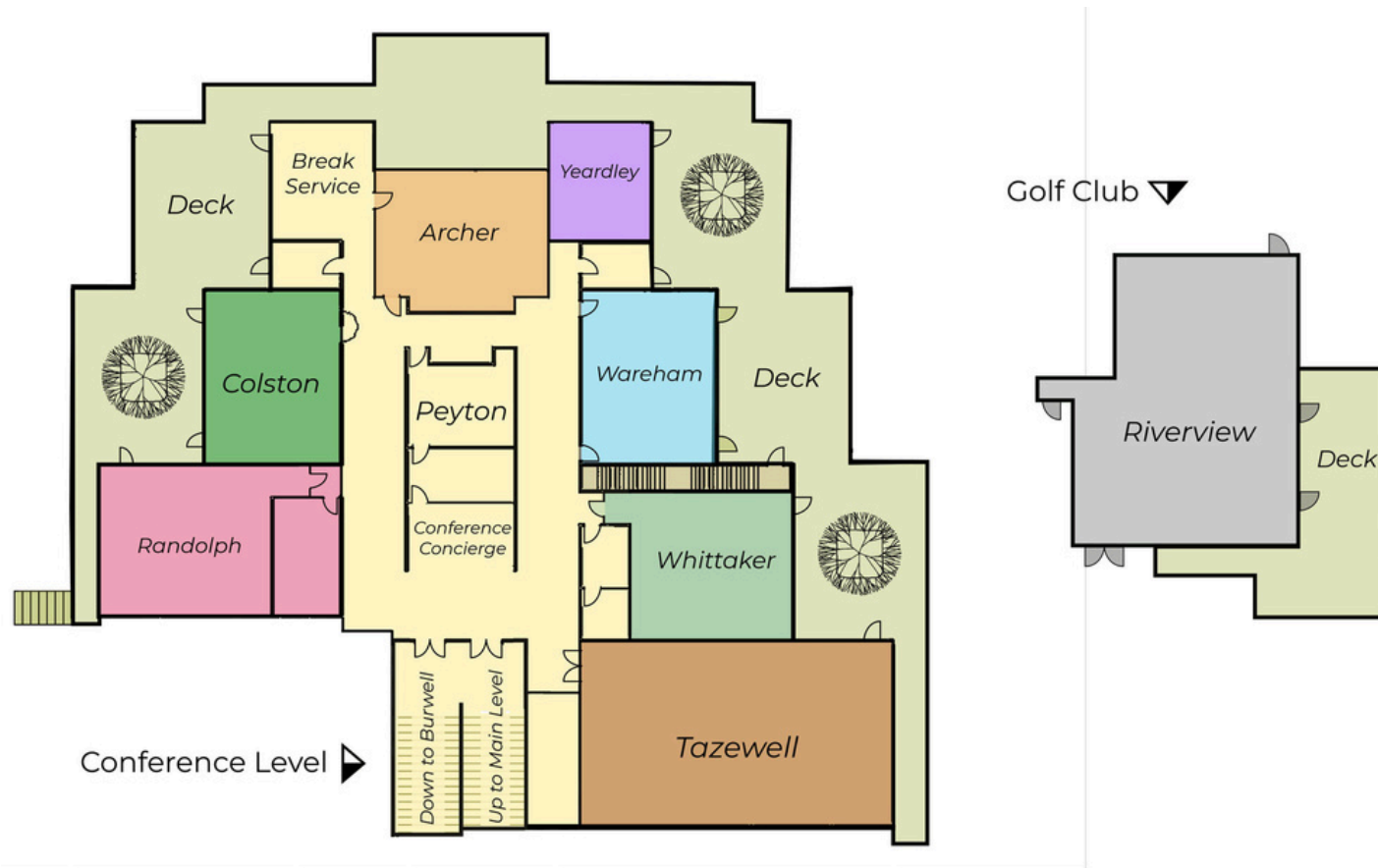
Average 2,148 square foot, these single-family homes overlook the James River, with each bedroom offering a private ensuite bathroom.

### The Estate at Kingsmill

This luxurious 7,000 square foot property features four primary suites, all with waterfront views, a private heated outdoor pool and jacuzzi, two luxury SUVs, and a dedicated Estate Manager to handle every detail.



# MEETING SPACE OVERVIEW

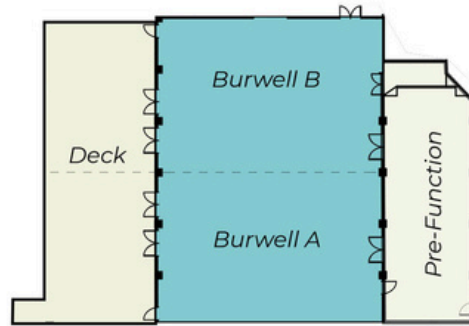


Room	Dimensions	Ceiling & Coffer Height	Sq. Ft.	Reception	Banquet	Theater	Classroom	Hollow Square	U-Shape	Conference
Tazewell	58' x 35'	12'/11'	2,010	120	120	156	117	45	42	36
Whittaker	30' x 27'	12'/11'	795	50	50	53	35	23	22	17
Wareham	32' x 25'	11'/11'	800	50	50	38	28	18	24	22
Yeardley	19' x 22'	11'/11'	418	--	--	--	--	--	--	12
Archer	32' x 23'	11'/11'	734	50	50	55	34	24	21	20
Colston	32' x 24'	11'/11'	776	40	40	57	34	27	25	20
Randolph	44' x 28'	12'/11'	1,232	50	50	84	60	33	33	22
Riverview	58' x 35'	11'/11'	962	70	60	--	60	40	35	40

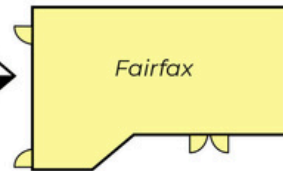


# MEETING SPACE OVERVIEW

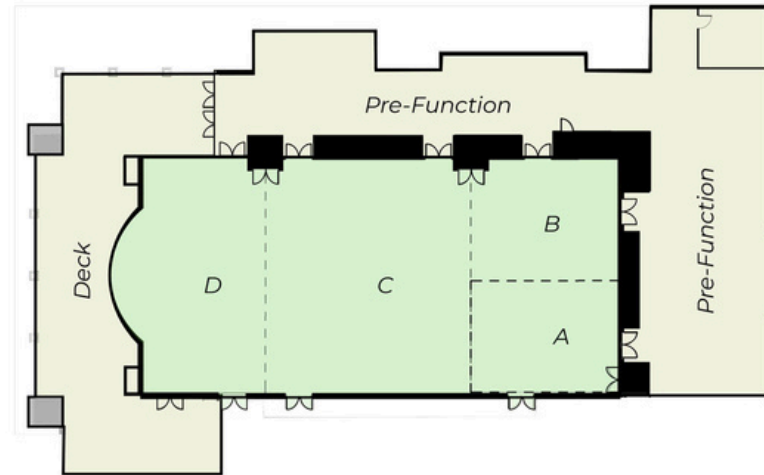
Lower Level-Burwell A&B ▼



Lobby Level-Fairfax ▶



Lobby Level-James River Grand Ballroom ▼



Room	Dimensions	Ceiling & Coffer Height	Sq. Ft.	Reception	Banquet	Theater	Classroom	Hollow Square	U-Shape	Conference
<i>A-D (total)</i>	110' x 55'	18'/14'	6,050	600	450	570	340	108	100	75
<i>A &amp; B (each)</i>	36' x 27'	18'/14'	990	100	70	78	48	34	32	25
<i>A &amp; B (total)</i>	55' x 36'	18'/14'	1,980	200	150	183	134	54	50	41
<i>Room C</i>	55' x 47'	18'/14'	2,640	270	200	222	144	58	56	35
<i>A, B &amp; C (total)</i>	55' x 84'	18'/14'	4,620	460	370	400	240	84	80	59
<i>Room D</i>	55' x 26'	18'/14'	1,430	150	90	130	64	42	40	35
<i>C &amp; D (total)</i>	55' x 74'	18'/14'	4,070	410	310	400	200	76	72	57
<i>JRGB Pre-Function</i>	--	18'/14'	2,249	--	--	--	--	--	--	--
<i>Fairfax</i>	30' x 21'	18'/14'	630	40	32	43	29	21	18	15
<i>Burwell A&amp;B (total)</i>	74' x 54'	15'/14'	4,000	400	300	299	188	70	58	40
<i>Burwell A</i>	54' x 36'	15'/14'	1,944	200	120	146	110	43	40	33
<i>Burwell B</i>	54' x 36'	15'/14'	1,944	200	120	146	110	43	40	33
<i>Burwell Pre-Function</i>	21' x 53'	15'/14'	1,456	--	--	--	--	--	--	--

## CRAFTED CULINARY MOMENTS



At Kingsmill Resort, dining is more than just a meal—it's an experience to savor. Imagine celebrating a special occasion while watching the sun set over the James River or enjoying dinner with a view of the River Course's 18th green. Our unforgettable cuisine, crafted from fresh and locally sourced ingredients, leaves a lasting impression. Whether it's a prix fixe menu or a custom option for your banquet or catering needs, our culinary team ensures every bite is memorable. Each of our distinctive dining outlets offers its own unique menu and ambiance, making every meal a special occasion.

### River's Edge Buffet

Located in the Resort Center, River's Edge Buffet offers panoramic views of the James River, setting the perfect stage for an exceptional dining experience.

### James Landing Grille

Situated at the Kingsmill Marina, this riverfront gem features fresh, locally sourced seafood with both indoor and outdoor seating, complemented by breathtaking views of the James River.

### Eagles

Overlooking the 18th green of the River Course, Eagles offers a dining room, patio, and lounge for relaxed meals or drinks with a view.

### The Mill

For a quick and delicious bite, The Mill is your go-to spot for specialty coffee, espresso, gourmet sandwiches, salads, homemade ice cream, and pastries—all with a courtside view of our tennis facilities.







## ROOTED IN HISTORY

Set against the stunning backdrop of the James River, Kingsmill Resort is the premier destination for golf enthusiasts and event planners alike. With three championship 18-hole courses, Kingsmill delivers an unforgettable golfing experience, whether you're hosting a casual gathering of friends or a high-stakes corporate tournament.

Our experienced PGA professionals and dedicated event planners ensure every detail of your event is executed flawlessly, from tee-off to awards ceremony, making your event as enjoyable as it is seamless.

### Golf Groups

Whether it's a getaway with friends, a family reunion, or a corporate retreat, Kingsmill Resort offers the perfect blend of challenge and relaxation for golf groups of all sizes. Our expert team works with you to create a customized itinerary, complete with rounds on our championship courses, on-site dining, and après-golf activities.

With amenities like our dedicated golf concierge, group rate packages, and easy access to the resort's luxurious accommodations and spa services, your group will enjoy the ultimate golf escape—both on and off the course.

### Tournaments

Kingsmill Resort is renowned for hosting world-class tournaments, and we bring that same level of professionalism and excitement to your corporate or charity event. Whether you're organizing a charity tournament or a high-profile corporate competition, our team ensures the experience is second to none.

From customized branding and tournament scoring to catered banquets and post-tournament celebrations, every detail is tailored to make your event memorable. Let us take care of the logistics, so you can focus on your players and guests.



## ACTIVITIES



### Water, Water Everywhere

Dive into one of our three resort pools, including a relaxing Lazy River, perfect for unwinding in style. For more adventurous water fun, stroll over to the full-service Kingsmill Marina, where group rates are available for jet-ski and pontoon boat rentals—adding excitement and a splash of fun to your stay.

### The Kingsmill Spa

Restore your body and mind at the award-winning Kingsmill Spa. With services ranging from hair and nails to full-body treatments, all set against the tranquil backdrop of the James River, it's the ultimate retreat for rejuvenation.



### On-Site Amenities

At Kingsmill Resort, we ensure your event extends beyond the ballroom. Your guests will enjoy:

- State-of-the-art Fitness Center
- Access to a fully equipped business center
- Two renowned 18-hole golf courses
- High-speed Wi-Fi in conference spaces and bedrooms
- Convenient shipping and receiving services
- Access to Tennis and Pickleball Courts
- Biking and walking trails
- Complimentary parking



### World Class Attractions

From thrilling rides at Busch Gardens to discovering the local craft breweries just minutes away, Williamsburg is filled with hidden gems waiting to be explored. Each guest is sure to leave with memories of a one-of-a-kind experience.







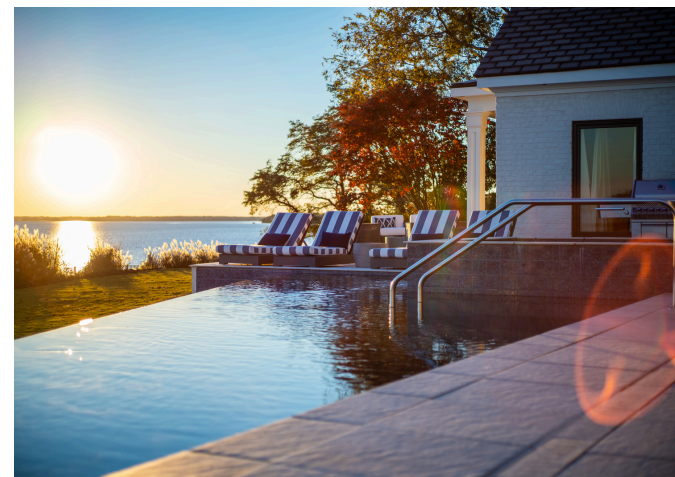
## THE ESTATE AT KINGSMILL

### Exclusive Luxury on the James River

For those seeking the ultimate in privacy and sophistication, The Estate at Kingsmill is an unrivaled retreat. This four-bedroom mansion is a world unto itself, offering breathtaking views of the James River through expansive glass walls, and access to a private infinity pool that sits against the backdrop of nature's finest.

Every aspect of your stay is customized to perfection. Your dedicated Estate Manager is at your service, arranging everything from private jet skis and personalized spa treatments to curated gourmet dining experiences, ensuring no detail is overlooked. With two luxury SUVs and custom golf carts, you have effortless access to everything Kingsmill Resort offers—if you choose to leave the comfort of your sanctuary.

Originally built as the exclusive retreat of the Busch family, The Estate has undergone a \$3 million transformation, seamlessly blending historic grandeur with modern indulgence. This is more than just a stay—it's an experience reserved for those who expect the extraordinary.



## YOUR WEDDING, YOUR WAY



At Kingsmill Resort, we believe every love story is unique—and your wedding day should reflect that. From intimate ceremonies surrounded by close family to elaborate celebrations filled with vibrant traditions, our team specializes in bringing your dream wedding to life. Whether you envision a small, elegant gathering or a grand Desi wedding we have the experience, spaces, and passion to make it unforgettable.

### A Collaboration of Expertise

Planning a wedding is a journey, and we're here to walk it with you. Our dedicated wedding team partners with you and your planner to bring your vision to life, ensuring every detail is flawlessly executed. From your initial consultation to the final toast, we handle the logistics so you can fully embrace and enjoy every moment of your special day.



### Venues as Unique as Your Love

Riverside Elegance Say "I do" on our picturesque waterfront lawns with the James River as your backdrop.

**Grand Ballrooms** Host a dazzling indoor celebration with plenty of space for dancing, dining, and memory-making.

**Seamless Indoor-Outdoor Options** Transition effortlessly from outdoor ceremonies to elegant indoor receptions.

**Cultural Celebrations** With years of experience hosting multicultural weddings, including elaborate Desi ceremonies, we honor and embrace your traditions.



### Celebrate Life's Milestones

Kingsmill isn't just for weddings—it's the perfect destination for all of life's special moments. From engagement parties to family reunions, and festive gatherings, our team is here to help you celebrate in style. With versatile spaces, custom menus, and expert event coordinators, every event becomes a lasting memory.



KK



KINGSMILL

*Resort*

WILLIAMSBURG, VIRGINIA

1010 Kingsmill Road, Williamsburg, VA 23185

800.832.5665 | [Kingsmill.com](http://Kingsmill.com)